



WHAT IS THE SR-79 REALIGNMENT PROJECT?



This SR-79 Realignment Project (Project) proposes to realign SR-79 between Domenigoni Parkway and Gilman Springs Road. Currently, the highway follows a circuitous north-south route through the downtown areas of Hemet and San Jacinto and needs improvements in efficiency, safety and capacity. The Project would realign the highway to provide a more direct route within the San Jacinto Valley. Regional motorists will be able to use a direct, north-south route while residents of Hemet and San Jacinto will enjoy better mobility on local streets.

WHAT IS HAPPENING WITH THE SR-79 REALIGNMENT PROJECT?

RCTC has been working on the Project Report and Environmental Document phase for the realignment of the facility. The required field surveys and technical reports have been largely completed.

The Project has been revised in response to agency and public input regarding local community access and visual impacts, mainly in the area south of Florida Avenue. The alternative corridors (Corridors 1 and 2) previously defined for Project analysis are not changing. However, within these corridors additional potential intersections and/or interchange locations are being considered. In addition, a lower vertical roadway profile is being considered to reduce visual impacts to surrounding communities. These changes are being analyzed in the Draft Environmental Impact Report/Environmental Impact Statement (Draft EIR/EIS) that is being prepared for the Project. Due to the consideration of this additional information, preparation of the Draft EIR/EIS is ongoing and public circulation is anticipated in 2010.



RCTC

Riverside County Transportation Commission

www.rctc.org

www.sr79project.info



SR-79 REALIGNMENT PROJECT

WHAT ARE THE CURRENT PROJECT ALTERNATIVES?

The current Project alternatives under review consist of Corridors 1 and 2 and are shown on the Project location map to the right. Both Corridors 1 and 2 begin south of Domenigoni Parkway and end immediately south of the San Jacinto River on Sanderson Avenue. There are four areas where Corridors 1 and 2 are different. There are two main choices in the south near the community of Winchester. To the south of Florida Avenue in the City of Hemet, the alignments differ by going through the hills or around them to the west. At Esplanade Avenue, one alignment crosses Esplanade west of Warren Road while the other crosses Esplanade Avenue east of Warren Road. In the north in San Jacinto, one alignment is closer to Sanderson Avenue, while the other is closer to Warren Road.

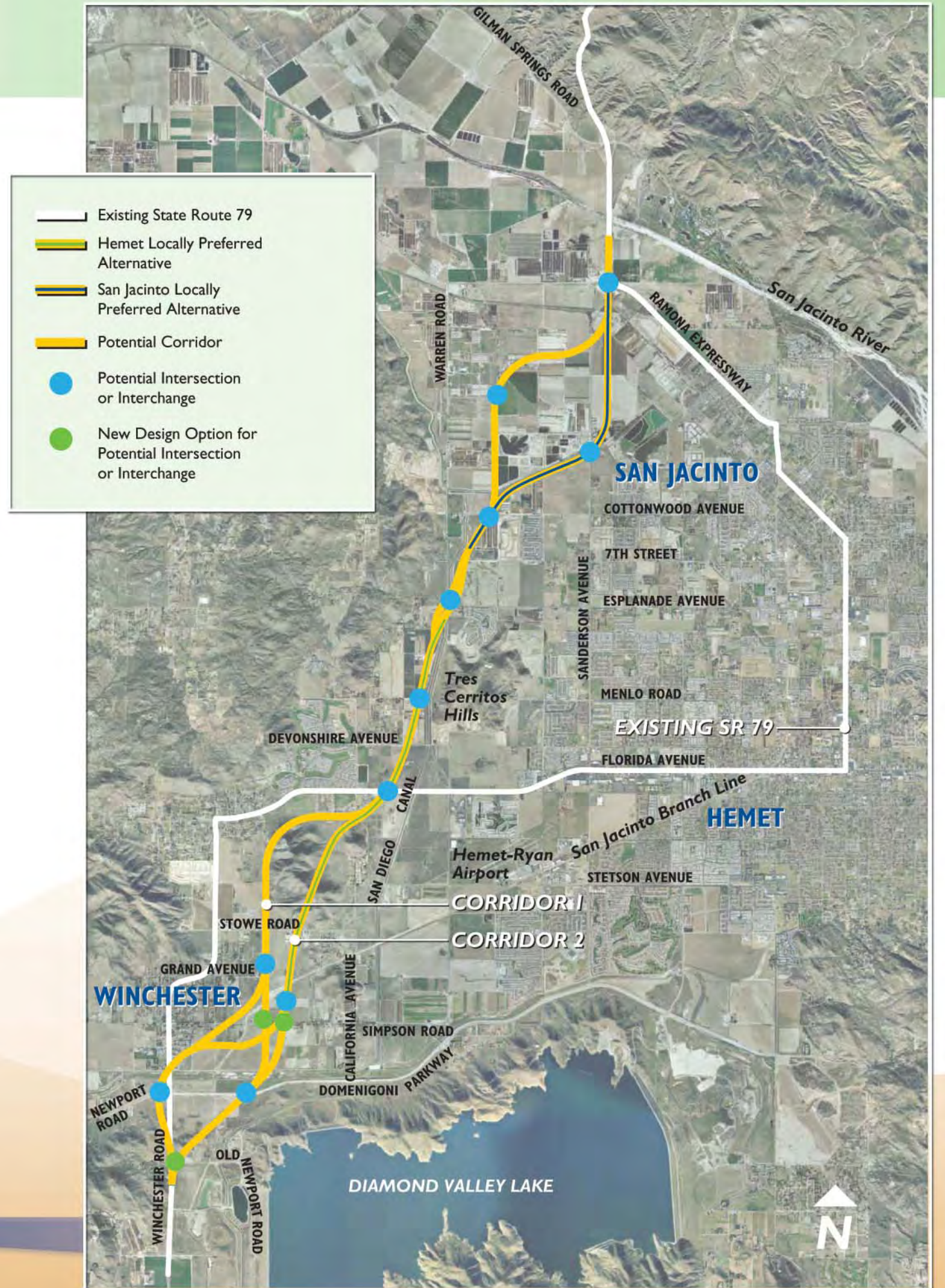
The locations along the roadway for potential intersection or interchange locations are shown on the Project location map as blue dots. In addition, to address agency and public input regarding local access and visual impacts, the Project alternatives now include design options to incorporate additional potential intersection or interchange locations at Newport and Simpson roads and a lower vertical roadway profile from Domenigoni Parkway north to California Avenue. The additional locations along the roadway for potential intersection or interchange locations are shown on the Project map as green dots. The locations shown on the map with blue and green dots would be the only areas where drivers would be able to access the realigned SR-79 once constructed.

The Project location map is also posted on the Project website: go to www.sr79project.info and click on "Location Map."

HAS A PREFERRED ALTERNATIVE BEEN SELECTED FOR THE PROJECT?

A preferred alternative has not been selected for the Project. The consideration of a preferred alternative for the Project will begin after the Draft EIR/EIS is circulated for public review in 2010.

The Cities of Hemet and San Jacinto have identified their preference for a Locally Preferred Alternative (LPA) for the Project. The City of Hemet's LPA was adopted by resolution on May 13, 2008, and is shown on the Project Location Map as a yellow line with a green center. The City of San Jacinto LPA was adopted as part of their General Plan in January 2006 and is shown on the Project Location Map as a yellow line with a blue center. The County of Riverside has not selected a Locally Preferred Alternative. The final Preferred Alternative will be selected after the Draft EIR/EIS is circulated to the public for review.



WHAT IS THE PROJECT SCHEDULE?

The Draft Technical Reports for the project are currently being completed and have been submitted for agency review and several of them have been finalized. The Draft Environmental Impact Report/Environmental Impact Statement (EIR/EIS) is currently in preparation. The next step is for the Draft EIR/EIS to be reviewed by RCTC and Caltrans and then released for public review. The next public meeting will occur when the Draft EIR/EIS is out for public circulation (anticipated 2010). RCTC will be accepting comments on the Draft EIR/EIS during this period. After public comments have been reviewed, the selection of a preferred alternative for the Project will be considered. Then, the Final EIR/EIS will be prepared to respond to public comments and to document the Project alternative that has been selected for future construction.

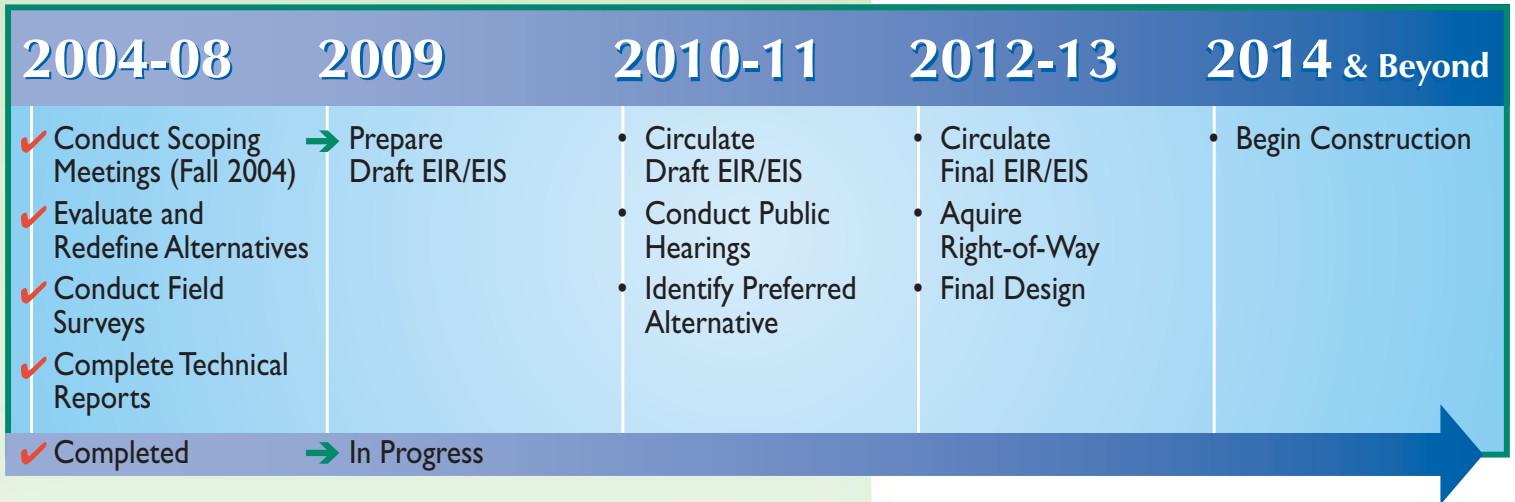
WHO ARE THE PROJECT PARTNERS?

The Riverside County Transportation Commission is working in partnership with:

- California Department of Transportation
- Federal Highway Administration
- County of Riverside
- City of Hemet
- City of San Jacinto

WHAT IS THE STATUS OF THE PROJECT SURVEYS?

The majority of the Project survey work has been completed! RCTC would like to thank all of the property owners that cooperated during this field survey effort. There are just a few surveys left to complete. These remaining surveys are for cultural resources and geotechnical work.



WHO CAN I CONTACT ABOUT THE SR-79 REALIGNMENT PROJECT?

If you have comments or questions about the SR-79 Realignment Project email us through our website at www.sr79project.info or call (951) 787-7141. You may also write to:

Cathy Bechtel—Project Development Director
 Riverside County Transportation Commission
 P.O. Box 12008 • Riverside, CA 92505-2208

